

aluminium  
**SLIDING  
DOORS**



**TRADE**  
*at Dream*



# ESS47 SLIDING DOORS

**Aluminium sliding doors create a visually stunning addition to your home and can add huge value to the property.**

**Thermal performance and strong, super slim profile sections to minimise the visible framework and maximise the glass area, is key to the ESS47 Sliding Door's design.**

**Engineering grade hardware allows for silky smooth opening and closing operation.**

**What's more, all our doors are rigorously tested to European safety standards and powder coated to Qualicoat's specifications, for complete peace of mind.**

## **Why choose Aluminium?**

- ✔ **Aluminium is extremely durable and hard-wearing. You'll be able to enjoy your aluminium doors for not only years but decades to come as they're incredibly resistant to the elements.**
- ✔ **It is an incredibly strong material, providing a high level of security.**
- ✔ **Aluminium doors are among the best-insulated on the market, thanks to advanced thermal break technology.**
- ✔ **They require very little maintenance to ensure optimal performance and to keep them looking good as new.**



**ESS47 Sliding Doors perfectly frame and enhance the outdoor view while creating a light, bright indoor space in your home. They effectively turn an entire wall into glass with the added freedom of accessibility and seamless connection between the indoors and outdoors.**

**With a super slim interlock of just 25mm for maximum vision, excellent thermal performance, noise reduction, high security and weatherproofing.**

**Designed for large spaces, single, double and triple track options are available allowing for a variety of opening configurations.**

**All our products can be finished in several glazing options to create a style to suit any property. Our sliding door range is available with the following glazing options:**

- ◆ **Double glazed**
- ◆ **Triple glazed**
- ◆ **Integral blinds**
- ◆ **Laminated Glass**
- ◆ **... and many more.**

**EN  
TESTED  
FOR SAFETY**

**QUALICOAT  
ASSURED  
POWDER  
COATED**

**ULTRA  
SLIM  
SIGHTLINES**





## Hardware and Security

The super slim ESS47 Sliding Door system comes with a range of sleek, complementary hardware. Available in a variety of colours.

Combined with a high-security multipoint locking system, keeping your property safe and secure.



## Configurations

The ESS47 Sliding Door system has a variety of opening configurations, depending on how many panes are chosen and which panes you would like sliding or fixed. There is a perfect solution for every project.



## Door Colours

Our doors are available in three standard colours, plus two dual colour options.



White  
RAL9016



Anthracite Grey  
RAL7016



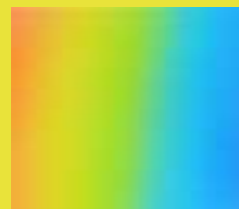
Black  
RAL9005



Grey Out/  
White in



Black out/  
White in



Bespoke RAL  
colour

For projects requiring bespoke coloured doors, any RAL colour can be available upon request.

## Design Features:

- ◆ **Super slim 25mm interlock.**
- ◆ **Double and triple track option.**
- ◆ **Double and triple glazing options.**
- ◆ **High security lock.**
- ◆ **Smooth sliding operation.**
- ◆ **Quick and easy to fabricate and install.**





**Our aluminium products complement our range of aluminium doors and windows and can be designed to coordinate with each other, for the complete look.**

**They can also be used on their own to make a unique statement.**



**Bifolding Doors**

# **OTHER PRODUCTS**

**Our product offering doesn't end with sliding doors. We have a full range of other aluminium home improvement products that cater for any project, any style, and any aperture.**

**Other products include:**

- **Windows**
- **Bifold Doors**
- **French Doors**
- **Single Doors**



**Super slim casement window**

**Our Aluminium window system features:**

**Matching 73mm frame, allowing easy connection to the bifold system if needed.**

**Flush frame and sash gives amazing sight-lines.**

**Document L compliant with all current regulations.**

**Choice of 5 frame and handle colours.**

**PAS 24 compliant.**



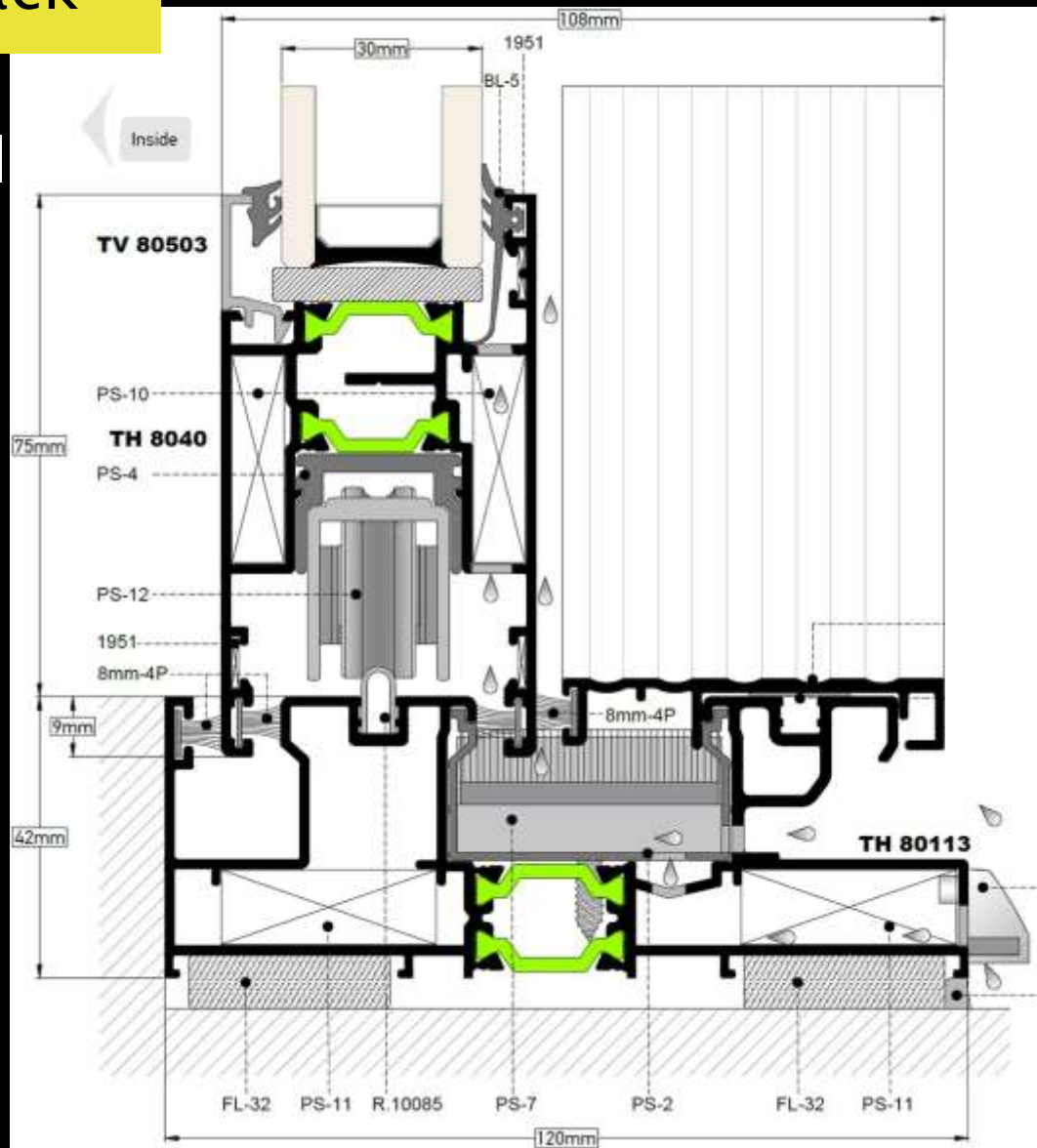
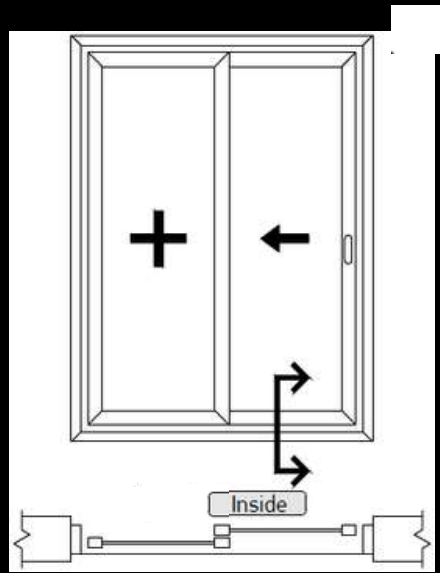
**Aluminium French Doors - Heritage Style**



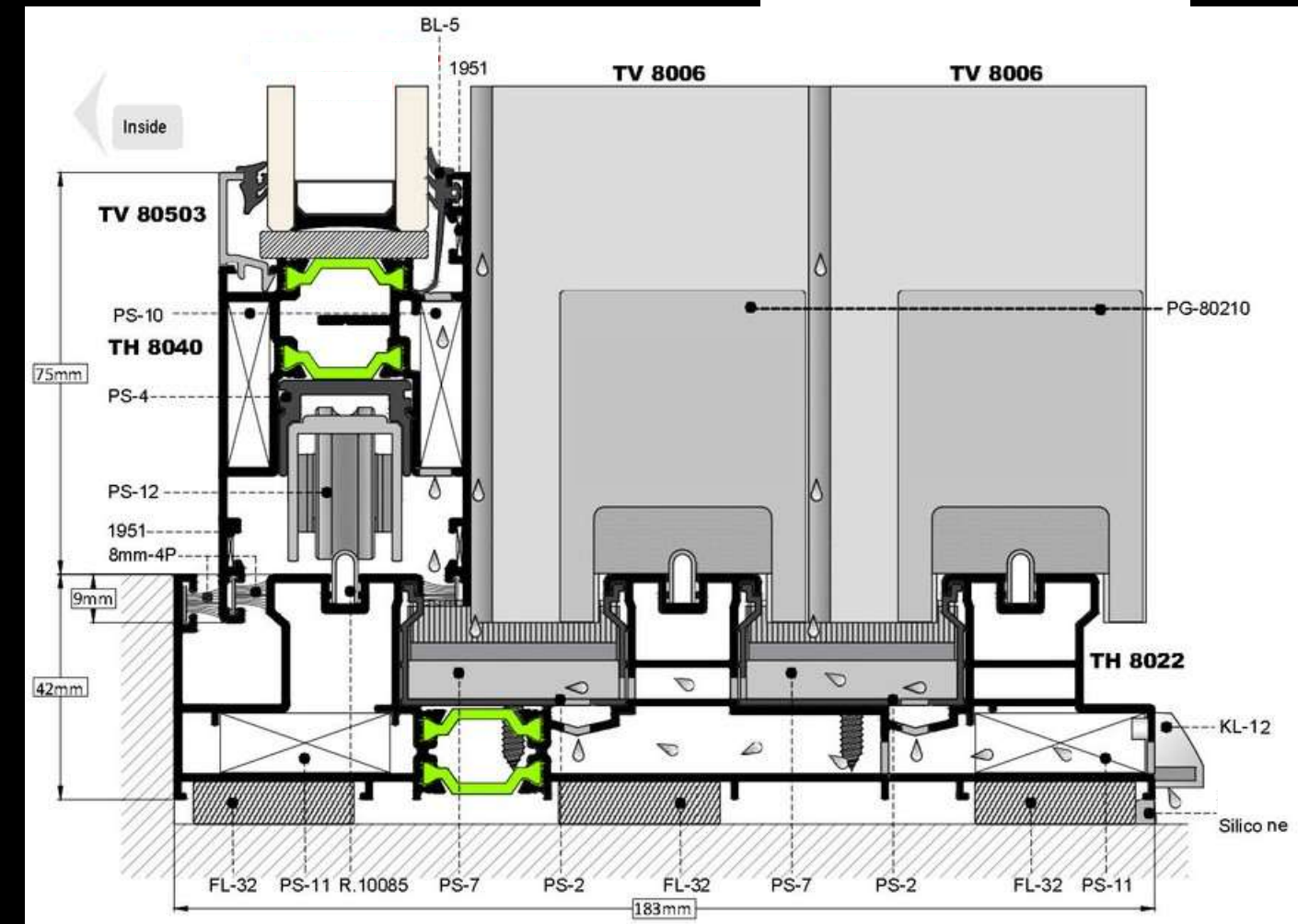
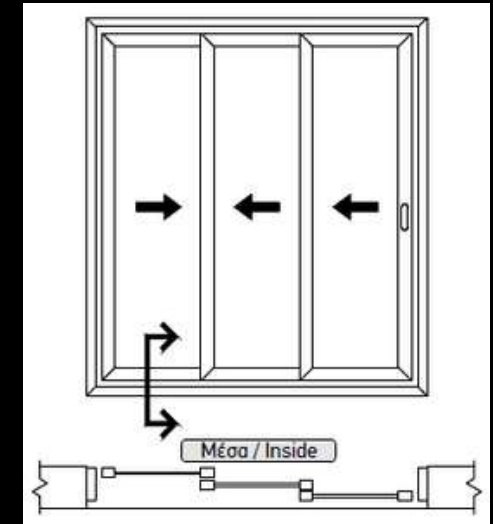
# SPECIAL FEATURES

- 25mm super slim interlock.
- 250kg max sash weight.
- 2.5 x 2.7m max sash dimension.
- Multiple configuration options.
- Inline slider and lift and slide option. 2 systems in 1.
- Rubber gaskets for better weathering.

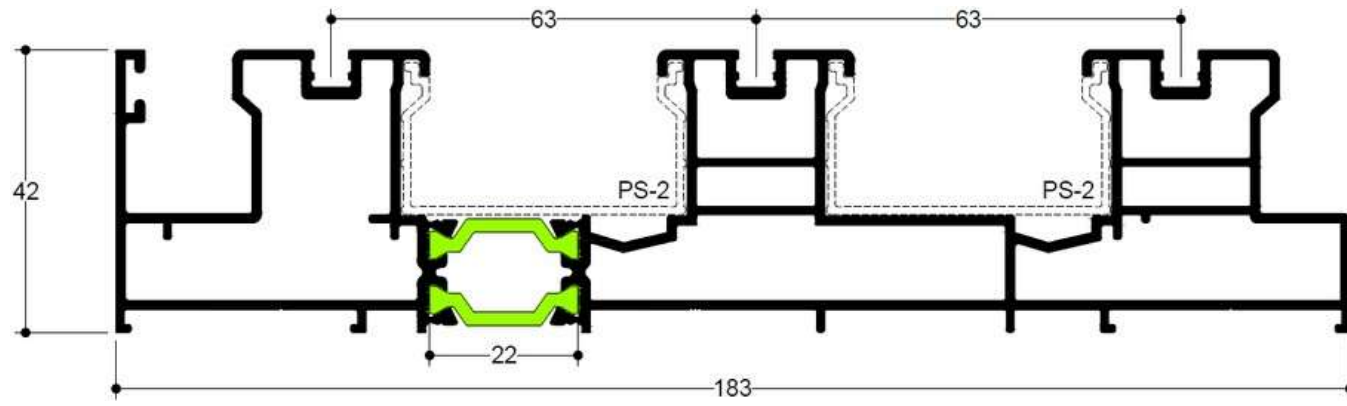
## Cross Section Double Track



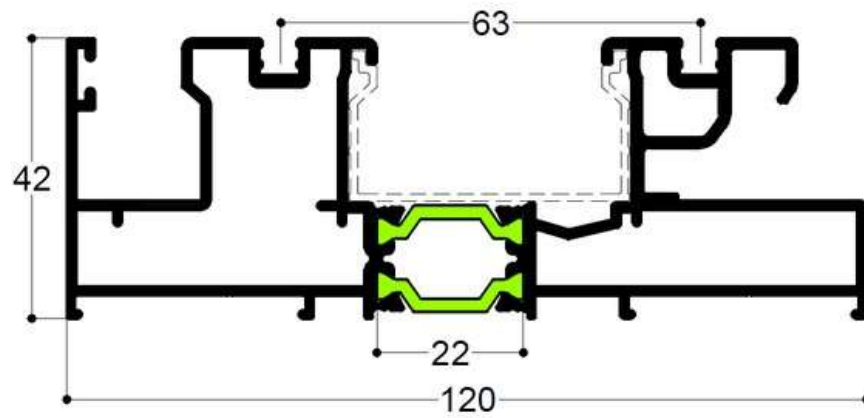
## Cross Section Triple Track



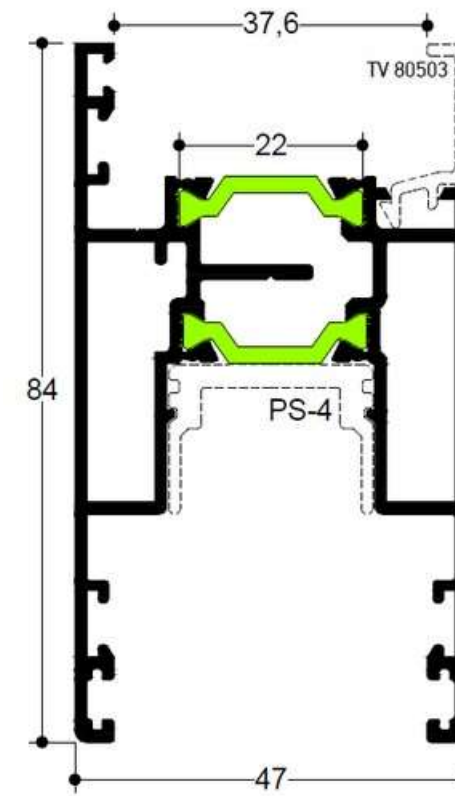
Triple Track



Double Track



Sash Profile




SUPER  
SLIM  
INTERLOCK





quality

# ALUMINIUM SYSTEMS



Scan the QR code to find our social media channels for all the latest news and inspiring installations.

**TRADE**  
*at Dream*

Tel: 0161 672 7960  
Email: [trade@dreambifolds.co.uk](mailto:trade@dreambifolds.co.uk)

[www.tradeatdream.co.uk](http://www.tradeatdream.co.uk)

